

Table of Contents

Introducing MagicPlot 2.9.1-2.9.3	1
<i>Enhancements</i>	2
<i>Fixes</i>	2

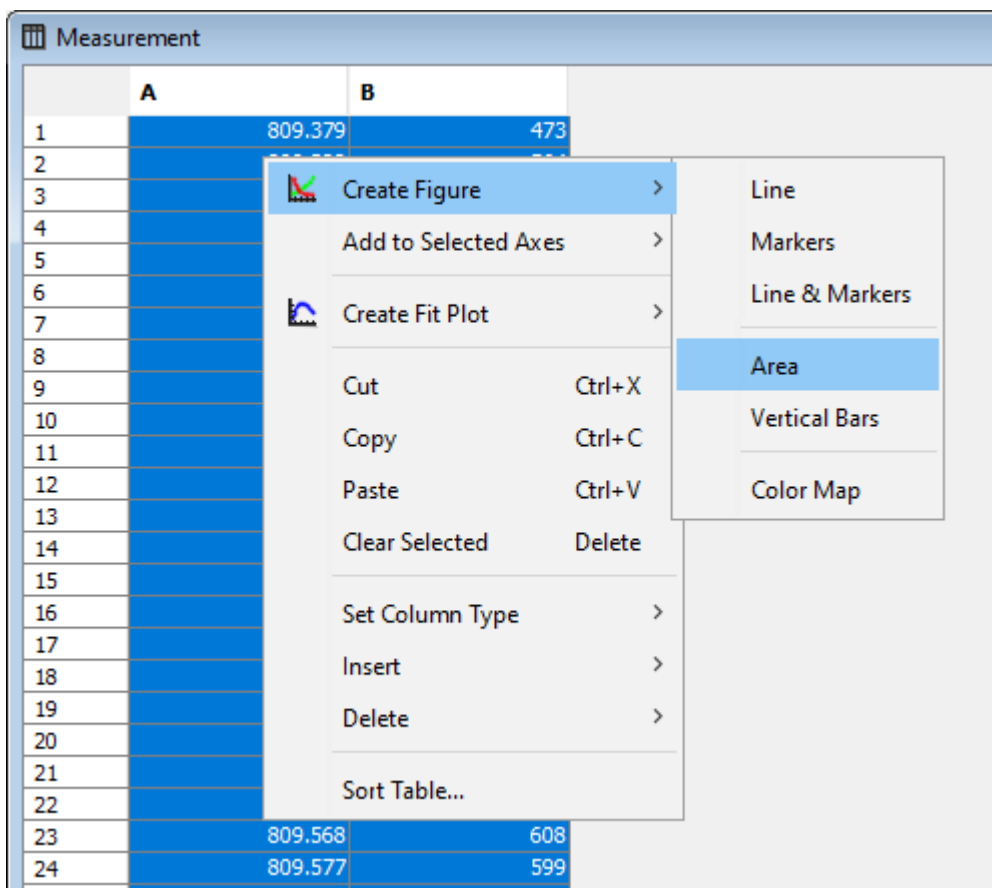
Introducing MagicPlot 2.9.1-2.9.3

Released November 01, 2019. This is a bug-fixing minor update with some enhancements.

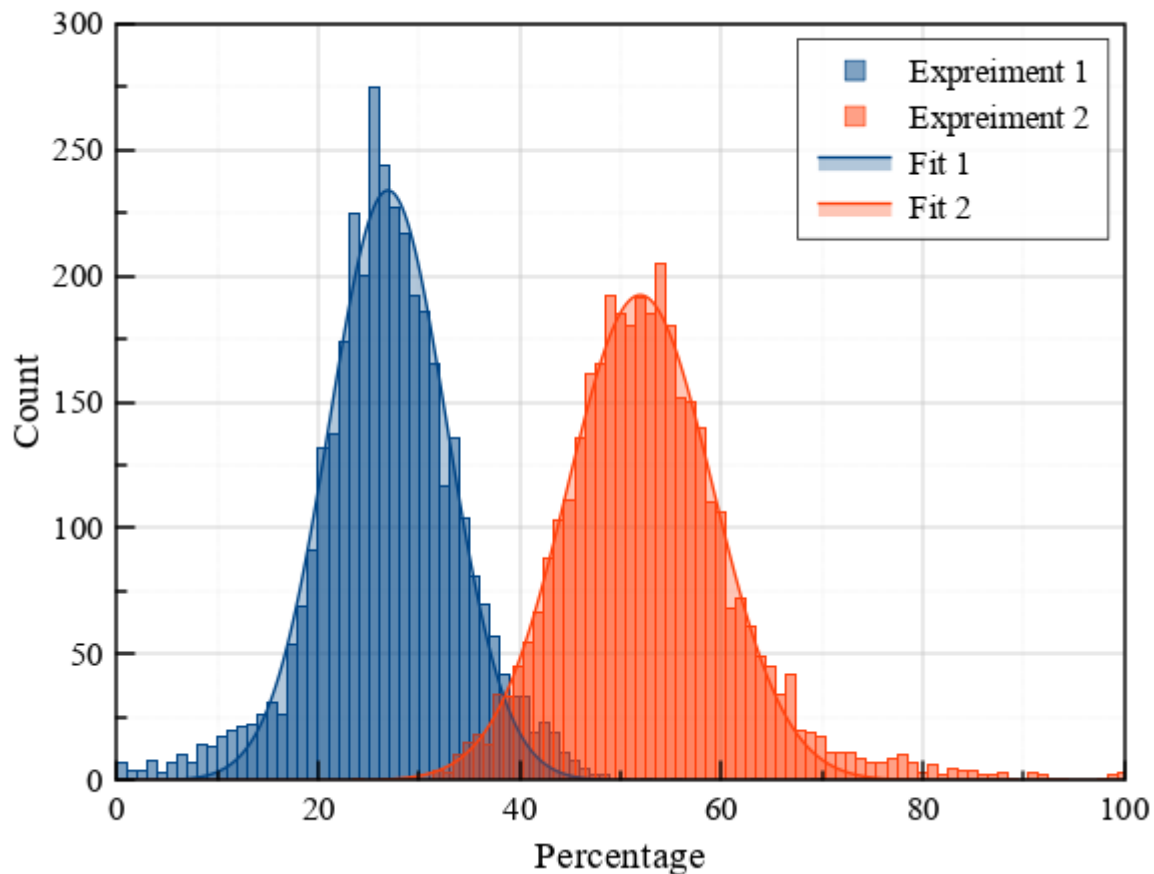
- [Full release history](#)
- [Help contents](#)
- [List of features](#)
- [The known OpenJDK unresolved issues that affect MagicPlot](#)

More Plot Types in Menu

We have added more already available plot types into the Create Figure menu:



Improved Histogram Legend



Enhancements

- 0000469: [Plots] When applying log scale, fix range from 'best view' if range $\leftarrow 0$
- 0000154: [Table] Column formula: 'j' variable for column number
- 0000076: [Plots] Add more available plot types into create plot menu

Fixes

- 0000466: [Other] Projects are merged if opened simultaneously
- 0000468: [Other] MacOS: Progress bar must not show text over the bar
- 0000465: [Plots] Progress dialog border is truncated on the right on Mac OS
- 0000447: [Other] The dollar sign (\$) is not saved correctly in column formula in project file
- 0000462: [Plots] Major tick and label may disappear on the boundary of the range
- 0000349: [Other] Add copy-paste context menu to fit parameters table
- 0000364: [Other] 'Add to current axes' figures list must be sorted like opened windows
- 0000335: [Drawing] Selection remain on all elements after Undo "Ungrouping".
- 0000431: [Plots] Copy Fit Curve from Figure to Figure in another Project: style is taken from the source Curve on Fit Plot instead of Figure
- 0000453: [Other] Project entities are not pasted if some folder is not selected in Project Tree
- 0000452: [Plots] Histogram legend must be drawn with squares instead of lines
- 0000293: [Plots] Curve fill is not shown in legend
- 0000454: [Other] Edited fit curve interval remains visible after curve deletion
- 0000445: [Plots] Program hangs if colormap legend range is log-scale and starts from 0

- 0000451: [Plots] Program hangs with zero scale range (min=max) and when scrolling with inverted scale (max<min)
- 0000440: [Plots] Color Maps: X index from a separate column is truncated with the matrix rows count

From:

<https://magicplot.com/wiki/> - **MagicPlot Manual**

Permanent link:

<https://magicplot.com/wiki/relnotes:notes291?rev=1610814074>

Last update: **Sat Jan 16 19:21:14 2021**

