

# Table of Contents

**Getting Started: Tables, Figures, Fit Plots and Undo** ..... 1

***Undo/Redo and History*** ..... 1

***Where to start?*** ..... 2

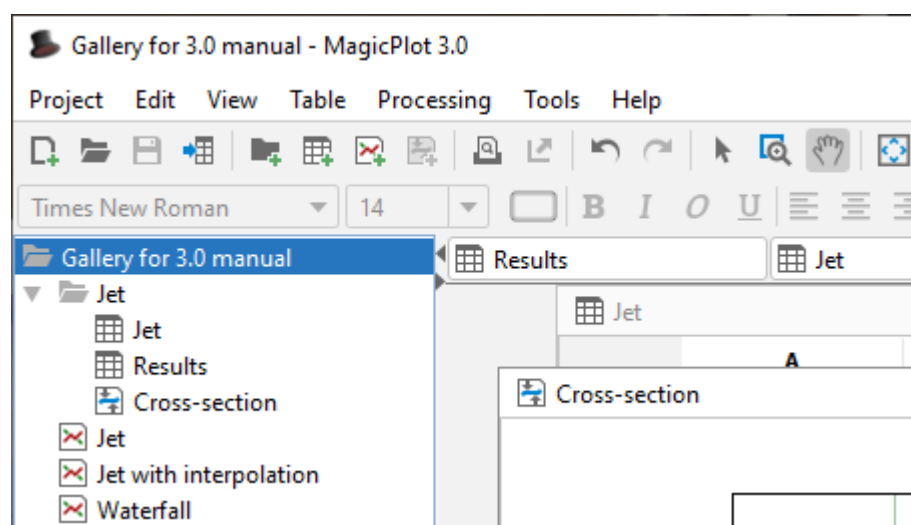
***Creating Figures and Fit Plots*** ..... 2



# Getting Started: Tables, Figures, Fit Plots and Undo

MagicPlot Projects contain Tables, Figures and Fit Plots. MagicPlot Projects files have **.mppz** extension.

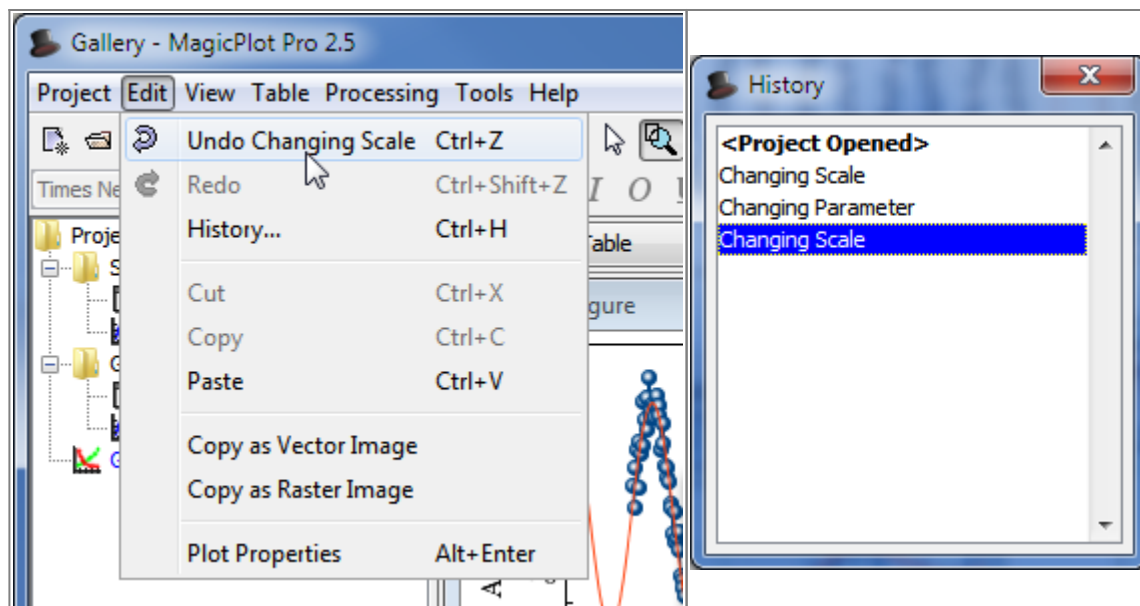
- Tables contain only numerical data.
- Tables which contain associated data are located in one Folder.
- Fit Plots are intended for non-linear curve fitting and subtracting baselines.
- Figures are intended to graphically represent multiple data.



Typically, you need to open, edit, process, plot and fit multiple data of various experiments or series of experiments within single project. Ordinarily you have the source (imported) Table and a number of Tables with derivative data, such as Fourier transform or statistics of source Table data. MagicPlot automatically creates a new Folder every time you import new Table. All derivative data is stored in the same Folder by default. All Plots created from Tables in certain Folder are stored in the same Folder.

## Undo/Redo and History

MagicPlot supports unlimited depth undo/redo function with History dialog window.



## Where to start?

In most cases you may start with [importing](#) table from text file by clicking Project → Import Text Table menu item.

## Creating Figures and Fit Plots

The easiest way to create Figure or Fit Plot is the following:

- Select two columns (x and y) in Table with your data
- Select Create Figure or Create Fit Plot item in the Table context menu (right click)

You also may use Create Figure or Create Fit Plot buttons in the toolbar.

From:

<https://magicplot.com/wiki/> - **MagicPlot Manual**

Permanent link:

[https://magicplot.com/wiki/getting\\_started?rev=1283323371](https://magicplot.com/wiki/getting_started?rev=1283323371)

Last update: **Sun Nov 8 12:20:32 2015**

