

Table of Contents

Adding and Arranging Axes Boxes on a Figure

'Add and Arrange Axes as Table' Dialog

Moving and Resizing of an Axes Box

See Also

.....

.....

.....

.....

1

2

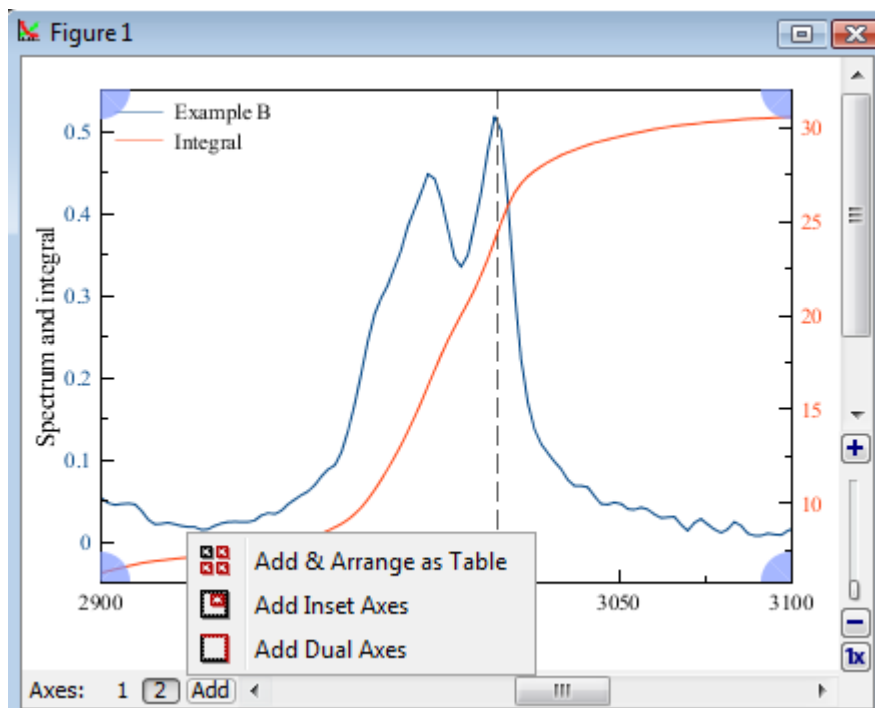
2

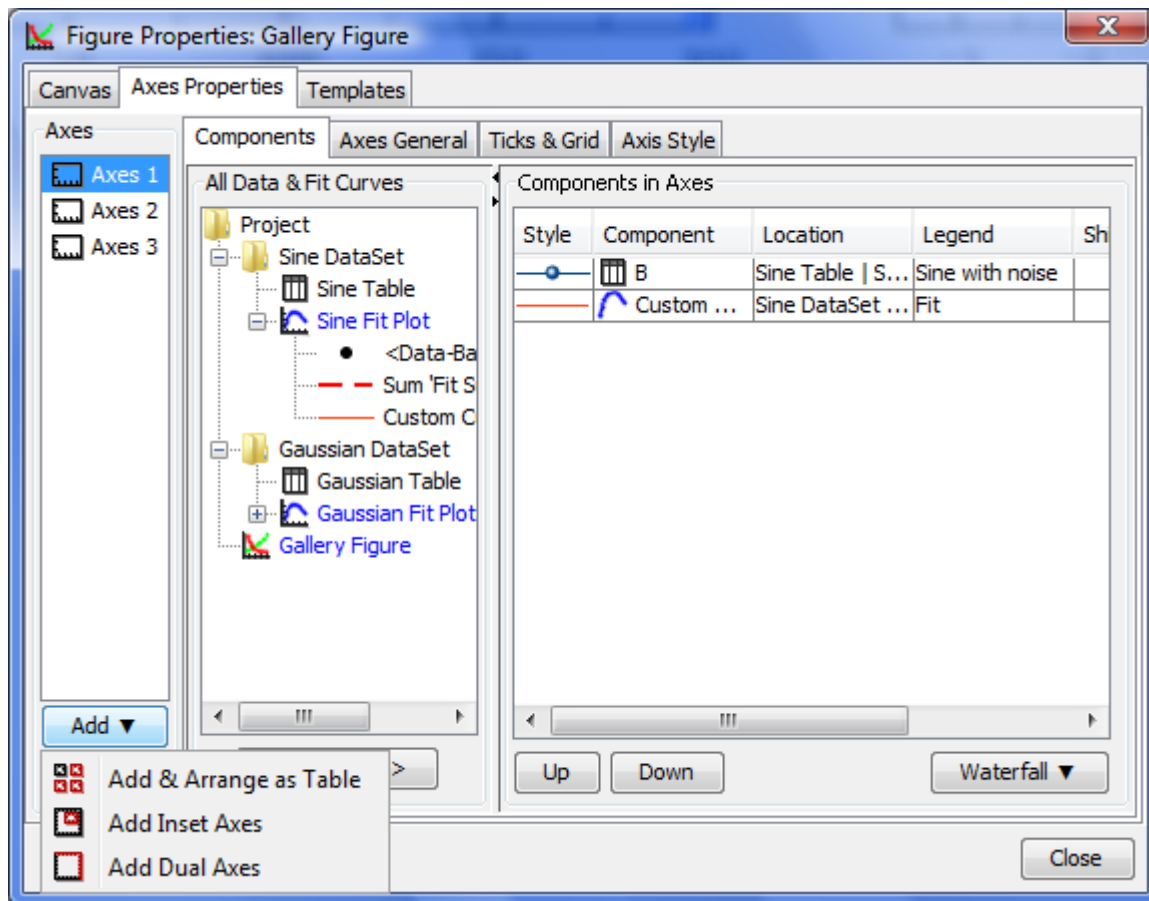
3

Adding and Arranging Axes Boxes on a Figure

You can add a new Axes box to a Figure using the Add menu either in the Figure window or in the Figure properties dialog.

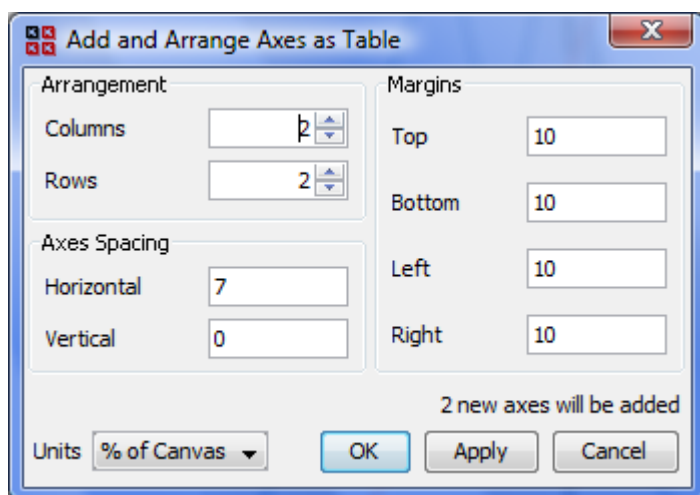
The Add & Arrange Axes as Table menu item can also be used for arranging of the existing Axes boxes as a table.





'Add and Arrange Axes as Table' Dialog

This dialog opens by selecting Add & Arrange Axes as Table menu item. It may be used for adding new Axes boxes and for arranging the existing Axes boxes without adding a new one.

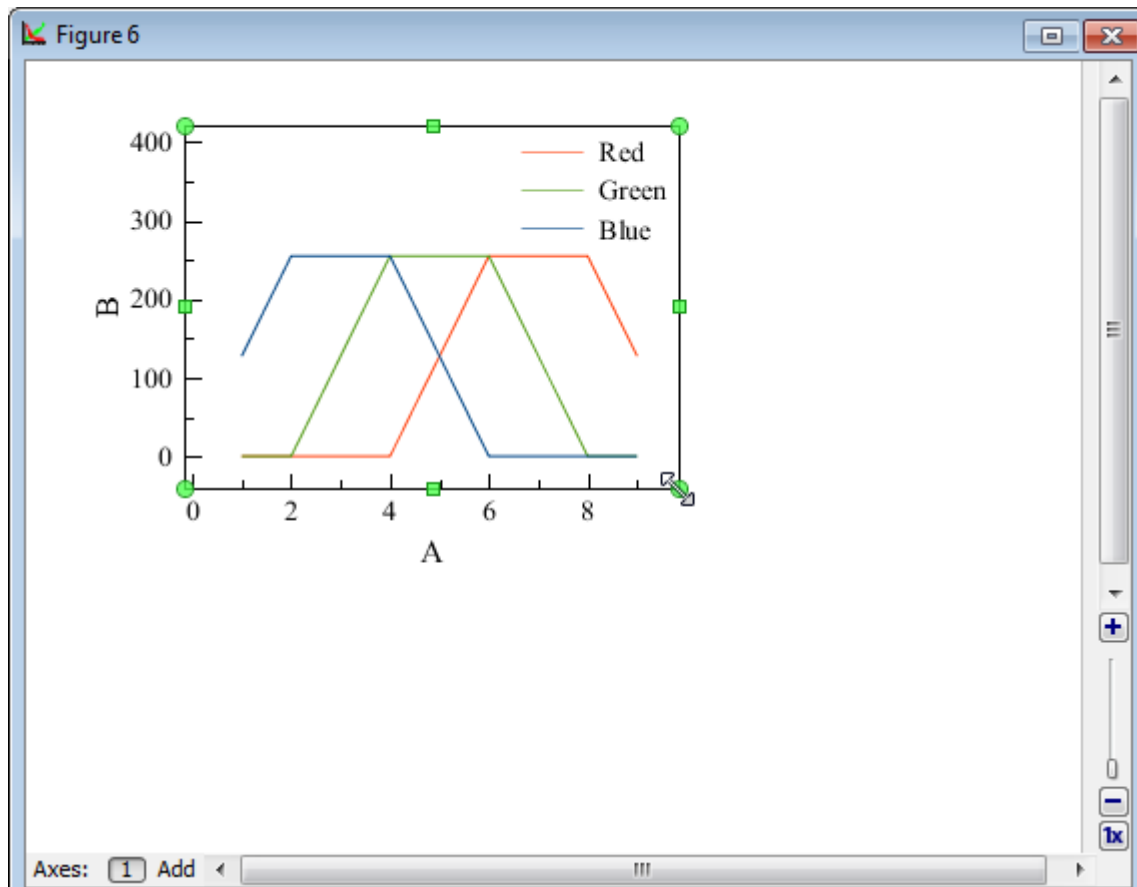


Moving and Resizing of an Axes Box

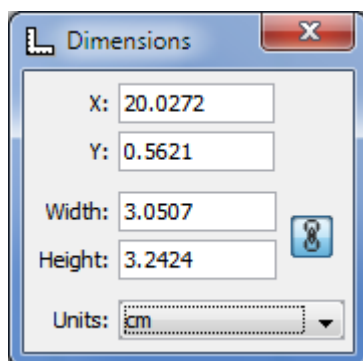
Axes box can be moved and resized as any other drawn object on the Figure canvas

1. Click on the Axes box border to select it. The green markers identifying your selection appear.

2. Drag Axes box border to move the Axes box on Canvas.
3. Draw border marker to resize Axes Box.



The [Using of Dimensions Toolbar](#) toolbar can also be used to set exact Axes box size and position. Open the Dimensions toolbar and select an Axes box to edit the values.



See Also

- [Creating a Figure](#)
- [Adding and Arranging Curves on Figure Axes](#)
- [Specifying Axis Multiplier, Prefix and Suffix](#)
- [Shifting Curves on Figure and Creating 2D Waterfall](#)
- [Using Figure Templates](#)
- [Drawing on Figures and Fit Plots, Image Zoom and Objects Selection](#)

From:
<https://magicplot.com/wiki/> - **MagicPlot Manual**

Permanent link:
https://magicplot.com/wiki/add_axes

Last update: **Tue Jul 5 13:11:34 2016**

