

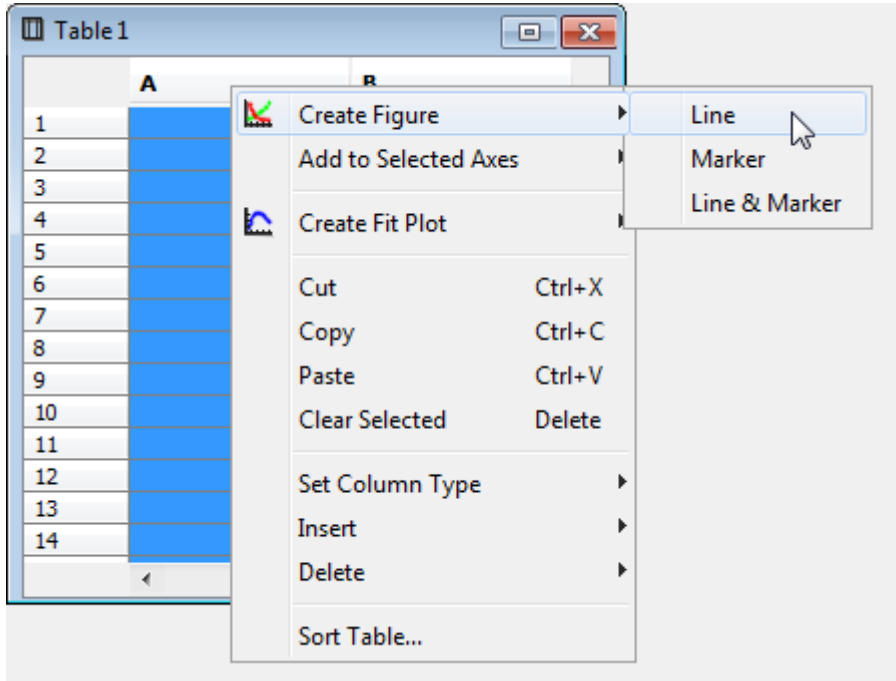
# Table of Contents

**Creating a Figure** ..... 1

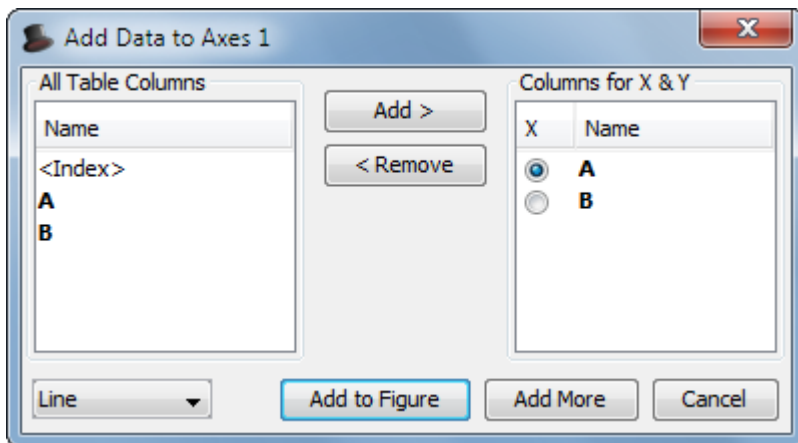


# Creating a Figure

To create a Figure select desired columns (one for X and one or more for Y) in Table and select Create Figure item in context menu. You also can use Create Figure button on the main toolbar.



A new Figure will be created and data selection dialog will be opened. Check the columns for plotting in the right list and specify which column must be treated as X. The rest columns will be used as Y values. So you can add multiple curves with different Y and the same X column.



- [Adding and Arranging Axes Boxes on a Figure](#)
- [Adding and Arranging Curves on Figure Axes](#)
- [Specifying Axis Multiplier, Prefix and Suffix](#)
- [Shifting Curves on Figure and Creating 2D Waterfall](#)
- [Using Figure Templates](#)

From:

<https://magicplot.com/wiki/> - **MagicPlot Manual**

Permanent link:

[https://magicplot.com/wiki/create\\_figure](https://magicplot.com/wiki/create_figure)

Last update: **Sun Nov 8 12:21:24 2015**

