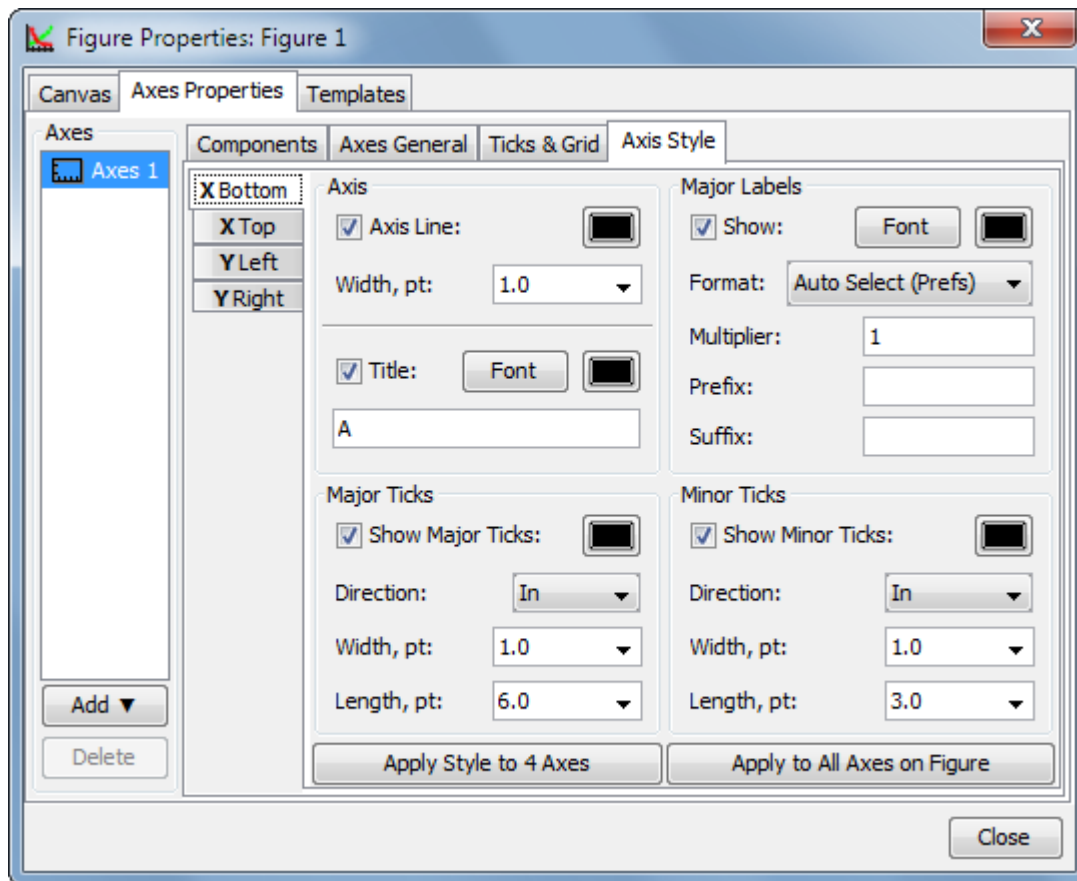


Table of Contents

| | |
|--|---|
| Specifying Axis Multiplier, Prefix and Suffix | 1 |
| See Also | 1 |

Specifying Axis Multiplier, Prefix and Suffix

MagicPlot can multiply the values on axis, add prefix and suffix. As an example you can use multiplier for removing redundant $\times 10^{12}$ notation from all labels and placing it manually. Suffix can be used to add units to all axis labels. This properties can be set in Axes Properties → Axis Style tab of Figure Properties dialog. Each of four axes (left, right, top, bottom) has own properties.



See Also

- [Creating a Figure](#)
- [Adding and Arranging Axes Boxes on a Figure](#)
- [Adding and Arranging Curves on Figure Axes](#)
- [Shifting Curves on Figure and Creating 2D Waterfall](#)
- [Using Figure Templates](#)

From:
<https://magicplot.com/wiki/> - **MagicPlot Manual**

Permanent link:
https://magicplot.com/wiki/axis_multiplier

Last update: **Sun Nov 8 12:21:24 2015**

